



BRINGING THE  
*Christmas Spirit*  
TO THOSE WHO NEED IT MOST

<https://thechristmasconnection.org>

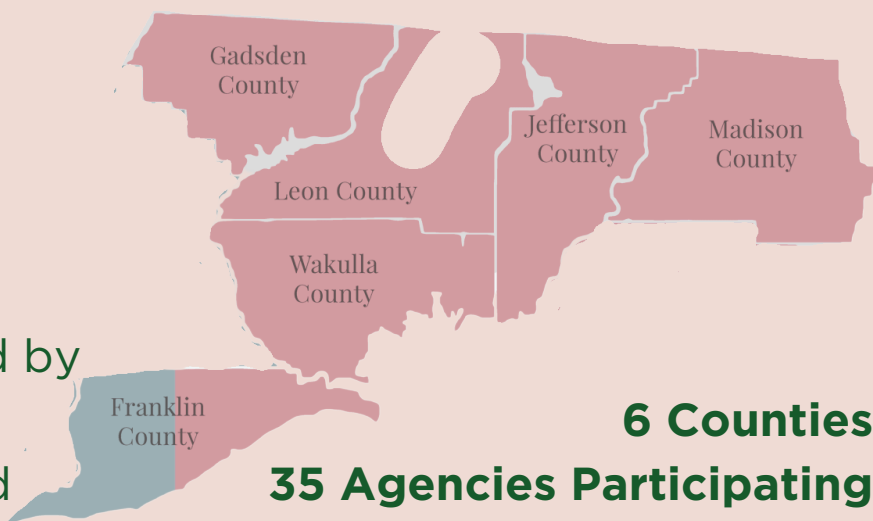
## 2024 RESULTS

### REFERRALS

- **502 Families**
- **2,154 Individuals**

### SERVED

- **281 Families Adopted by the Community**
- **221 Families Shopped for at the Warehouse**



**6 Counties**

**35 Agencies Participating**

**TOTAL - 502 FAMILIES SERVED**

### COLLECTION DRIVES

**1660** Items were collected

**18** Churches, schools and businesses served as collection drive sites.



### GIFTS

**Over 3,432 gift items** were donated and delivered to the **Christmas Connection site** over a 3-week period from our generous community.

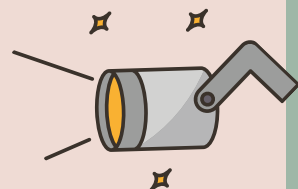


### VOLUNTEERS

**Volunteers are at work throughout the entire year.** From January through October, a dedicated core group works behind the scenes. The number of volunteers triples for November through December to fulfill the wishes referred to the Christmas Connection.

TOTAL NUMBER OF VOLUNTEER HOURS  
FOR JANUARY - DECEMBER 2024...

**4,164 VOLUNTEER HOURS**



**This year we celebrated 45 years of bringing the Christmas Spirit to our neighbors in need.**

Once again, the Leon County Community was right there with us. Through the community's time, talents and resources, Christmas spirit was spread to the most vulnerable families in our area.

The Christmas Connection program is a ministry of Catholic Charities of Northwest Florida. In addition to the assistance provided during the holiday season, work continues throughout the year helping our neighbors in need with essentials such as rent and utilities.



<https://ccnwfl.org/>